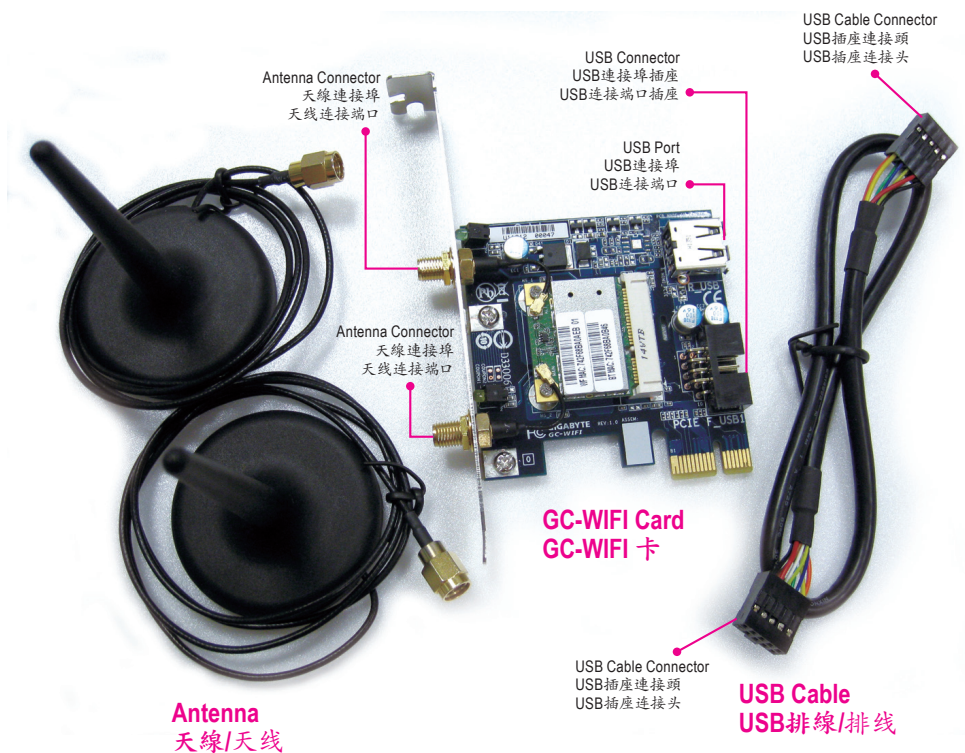


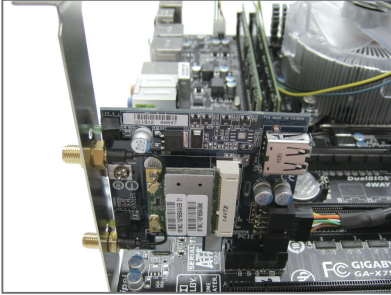
GC-WIFI

Installation Guide/安裝指南/安裝指南

12WE6-00WIFI-10AR



Installing the GC-WIFI Card/安裝GC-WIFI/安裝GC-WIFI



Step 1:

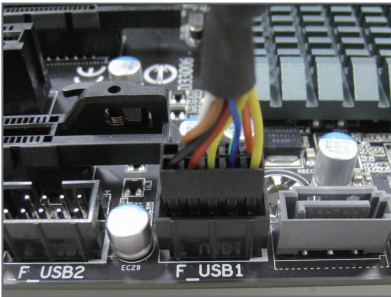
Install the GC-WIFI card in a PCI Express x1 slot. Connect one end of the USB cable to the USB connector on the GC-WIFI card.

步驟一：

先將GC-WIFI卡安裝至PCI Express x1插槽，接著將USB排線的一端接至GC-WIFI卡的USB連接埠插座。

步驟一：

先將GC-WIFI卡安裝至PCI Express x1插槽，接著將USB排線的一端接至GC-WIFI卡的USB連接埠插座。



Step 2:

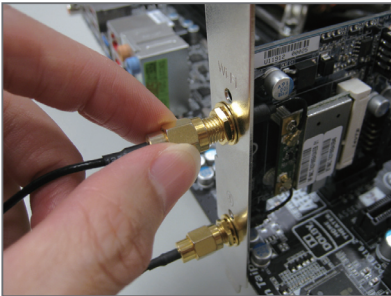
Connect the other end of the USB cable to the F_USB connector on the motherboard.

步驟二：

再將USB排線的另一端接至主機板的F_USB插座。

步驟二：

再將USB排線的另一端接至主板的F_USB插座。



Step 3:

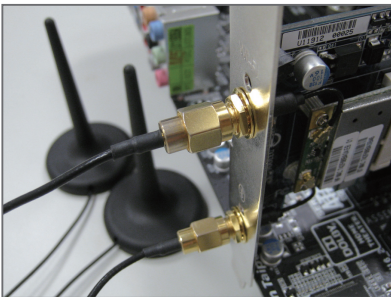
Tighten the two antenna cables to the antenna connectors on the GC-WIFI card respectively.

步驟三：

將兩個天線分別鎖至GC-WIFI的天線連接埠。

步驟三：

將兩個天線分別鎖至GC-WIFI的天線連接埠。



Step 4:

Then move the antennas to a place where the signal is good.

步驟四：

完成安裝後將天線移至收訊良好處。

步驟四：

完成安裝後將天線移至接收信號良好的地方。

Step 5:

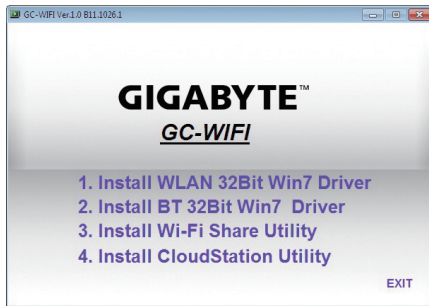
After the computer starts, install the driver for the GC-WIFI card. Adjust your wireless LAN configuration based on your environment after installing the driver.

步驟五：

啟動電腦後請安裝GC-WIFI 驅動程式。完成後即可依環境中的無線網路選擇連接。

步骤五：

启动电脑后请安装GC-WIFI 驱动程序。完成后即可依环境中的无线网络选择连接。



The Wi-Fi Share Utility is for Windows 7 only.

「Wi-Fi Share Utility」僅支援作業系統Windows 7。

「Wi-Fi Share Utility」仅支持Windows 7操作系统。

FCC Notice (U.S.A. Only)

This equipment generates, uses, and can radiate radio frequency energy and, if not installed and used in accordance with the instructions, may cause harmful interference to radio communications. However, there is no guarantee that interference will not occur in a particular installation. If this equipment does cause harmful interference to radio or television reception, which can be determined by turning the equipment off and on, the user is encouraged to try to correct the interference by one or more of the following measures:

- Reorient or relocate the receiving antenna.
- Increase the separation between the equipment and receiver.
- Connect the equipment into an outlet on a circuit different from that to which the receiver is connected.
- Consult a dealer or experienced TV/radio technician for help.

Properly shielded and grounded cables and connectors must be used in order to meet FCC emission limits. Neither the Dealer nor the Manufacturer are responsible for any radio or television interference caused by using other than recommended cables and connectors or by unauthorized changes or modifications to this equipment. Unauthorized changes or modifications could void the user's authority to operate the equipment.

European Community Directive R&TTE Directive Compliance Statement:

This equipment complies with all the requirements and other relevant provisions of Directive 1999/5/EC of the European Parliament and the Council of March 9, 1999 on Radio Equipment and Telecommunication Terminal Equipment (R&TTE).

This equipment is suitable for home and office use in all the European Community Member States and EFTA Member States.

Taiwan Wireless Statements:

無線設備警告聲明

經型式認證合格之低功率射頻電機，非經許可，公司、商號或使用者均不得擅自變更頻率、加大功率或變更原設計之特性及功能。

低功率射頻電機之使用不得影響飛航安全及干擾合法通信；經發現有干擾現象時，應立即停用，並改善至無干擾時方得繼續使用。

前項合法通信，指依電信法規定作業之無線電通信。

低功率射頻電機須忍受合法通信或工業、科學及醫療用電波輻射性電機設備之干擾。

Declaration of Conformity

We, Manufacturer/Importer,

G.B.T. Technology Trading GmbH
 Address: **Bullenkoppel 16, 22047 Hamburg, Germany**

Declare that the product
 Product Type: **PCIe add-in card**
 Product Name: **GC-WIFI**

conforms with the essential requirements of the following directives:

- 2004/108/EC EMC Directive:**
 - Conduction & Radiated Emissions: EN55022:2006+A1:2007
 - Immunity: EN55024:1998+A1:2001+A2:2003
 - Power-line harmonics: EN61000-3-2:2006
 - Power-line flicker: EN61000-3-3:1995+A1:2001+A2:2005
- 2006/95/EC LVD Directive**
 - Safety: EN60950-1:2006+A11:2009
- 1999/5/EC R&TTE Directive**
 - Technical Requirements: EN 300 328 v1.7.1
EN 301 489-17 v2.1.1
- 2011/65/EU RoHS Directive**
 - Restriction of use of certain substances in electronic equipment: This product does not contain any of the restricted substances listed in Annex II, in concentrations and applications banned by the directive.

CE marking



Signature: Timmy Huang

(Stamp) Date: 10/25/2011 Name: Timmy Huang

DECLARATION OF CONFORMITY

Per FCC Part 2, Section 2.1077(a)



Responsible Party Name: G.B.T. INC. (U.S.A.)

**Address: 17358 Railroad Street
 City of Industry, CA 91748**

Phone/Fax No: (626) 854-9338/ (626) 854-9326

hereby declares that the product

Product Name: PCIe add-in card

Model Number: GC-WIFI

Conforms to the following specifications:

FCC Part 15, Subpart B, Section 15.107(a) and Section 15.109 (a), Class B Digital Device

Supplementary Information:

This device complies with part 15 of the FCC Rules. Operation is subject to the following two conditions: (1) This device may not cause harmful and (2) this device must accept any interference received, including that may cause undesired operation.

Representative Person's Name: ERIC LU

Signature: Eric Lu

Date: 10.25.2011

Wireless Module Country Approvals/無線裝置國家/地區認證:

United States FCC ID: PPD-AR5B95	Jordan TRC/SS/2009/16	Singapore Complies with IDA Standards DA104328	Azerbaijan Sertifikat No.: SŞ/2-ŞIV-20
Canada IC: 4104A-AR5B95	Kuwait MC/USO/316-4257	Taiwan CCAE08LP1590T0	Bahrain TRA: LIC/0109/N/35
Argentina CNC: C-7152	Lebanon 491/O&M/2009	Brunei AIFI: DRQ-D-BRUSIN-03-1998-7494-LPD-12586	Egypt NTRA: W-WPC-8
Brazil 0223-09-3987 (01)07898915959871 <small>Este equipamento opera em caráter secundário, isto é, não tem direito a proteção contra interferência prejudicial, mesmo de estações do mesmo tipo, e não pode causar interferência a sistemas operando em caráter primário.</small>	Qatar ICTQATAR/RT/2009/R-1347	Vietnam MIC: A0066140109AE01A2	Israel MOC: XX-XXXXX
Chile SUBTEL: 30305/DFRS00052/F-49	Russian Federation DOC No.: PJ-07060n 12-Feb-2009 Expires: 12-Feb-2012	Australia 	Pakistan
Costa Rica CNR: 061-SUTEL-2009	South Africa 	Philippines 	NTC Type Approved No.: ESD-0903961C
Ecuador SUPERTEL-2008-000837	Ukraine 	New Zealand ZXXX	
Mexico RCPATAR09-0168	United Arab Emirates TRA: 0016926/09	Japan 003WWA081036 003GZA081037 D081038003	
Panama ASEP: DSAN-0728-09	China CMIIT ID: 2009DJ0217	Nepal NTA: R-SRD-P-24	
Paraguay CONATEL: 2009-02-I-0011	India WPC ID: ETA-046/2009-R		
Peru MTC: TRSS19200	Indonesia DGPT ID: 10069/POSTEL/2009 PLG ID: 1820		
Uruguay URSEC: 432/FR/2008	Korea 		
European Union 	ATH-AR5B95 		